

AIX Preview: Round two

After a long-anticipated wait and with just only a few weeks left to go, [Aircraft Interiors Expo](#) (AIX) will return to Hamburg, Germany from June 14 to 16. Here is the second round of some of the products and companies who will be attending and exhibiting at the show.

PAX Tech magazine is media partner for AIX and will be distributing its June AIX issue at the show. You can view Round One [here](#).



IPECO

IPECO – [ipeco](#) will be showcasing their latest SAROS Beverage Maker. Key features include the ability to brew 1.5 litres of beverage to 88 C in under four minutes and patented light bar technology unique to the SAROS range which clearly displays brewing status; however, flow-through heating which facilitates non-stop brewing is the game-changer. **Booth:** 5B50



Tenneco Systems Protection

Tenneco Systems Protection - [Tenneco Systems Protection](#) has been focusing a lot of its recent developments around the challenges associated with fluid compatibility, arc and enhanced fire resistance. Tenneco is be proud to share with its existing and future customers its most recent testing rigs acquired together with reports on new products recently released. **Booth:** 6F131



Widney Manufacturing

Widney Manufacturing - Launching for the first time at AIX 22 will be two new [Widney](#) products — the 150 and 300 series aluminium slides. Developed using high-grade alloys and polymer bearings, the compact I beam sections weigh in at 2.1 kilograms per metre offering a robust and compact,

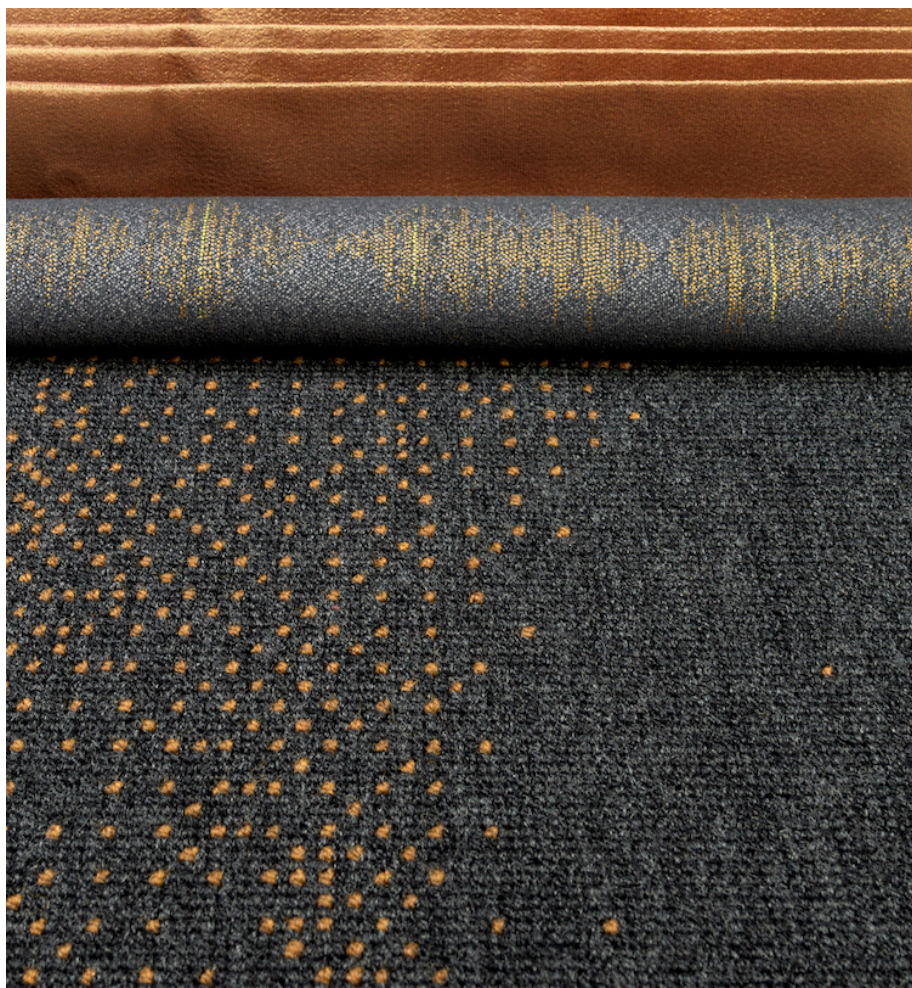
lightweight sliding solution ideal for cabin interior applications. **Booth:** 1F55



Würth Aviation Solutions

Würth Aviation Solutions - [Würth Aerospace Solutions GmbH](#) was founded on January 24, 2020 as an independent subsidiary of the Würth Group. In addition to an extensive range of high-quality fasteners as well as auxiliary and operating materials, it offers customers in the aerospace industry, intelligent system solutions and service concepts for a maximum security of supply. **Booth:** 1F31

SCHOTT - [SCHOTT](#) Jade Reading Light! Any decor or design in any RAL or metallic color is printed on the back of the touch-controlled glass cover, creating optical depth. The operation symbols for light intensity and beam direction are applied to the surface with ceramic printing, offering high resistance for daily use. **Booth:** 7C11



Tisca Tischhauser

Tisca Tischhauser AG - For AIX 2022 the [Tisca](#) designers have taken on a special theme: SPACEWALK. The featured fabrics and carpets were created to get the feel of a SPACEWALK - floating through the Milky Way. Another novelty on display will be the Tisca Eco Edition Carpets. **Booth:** 5D02