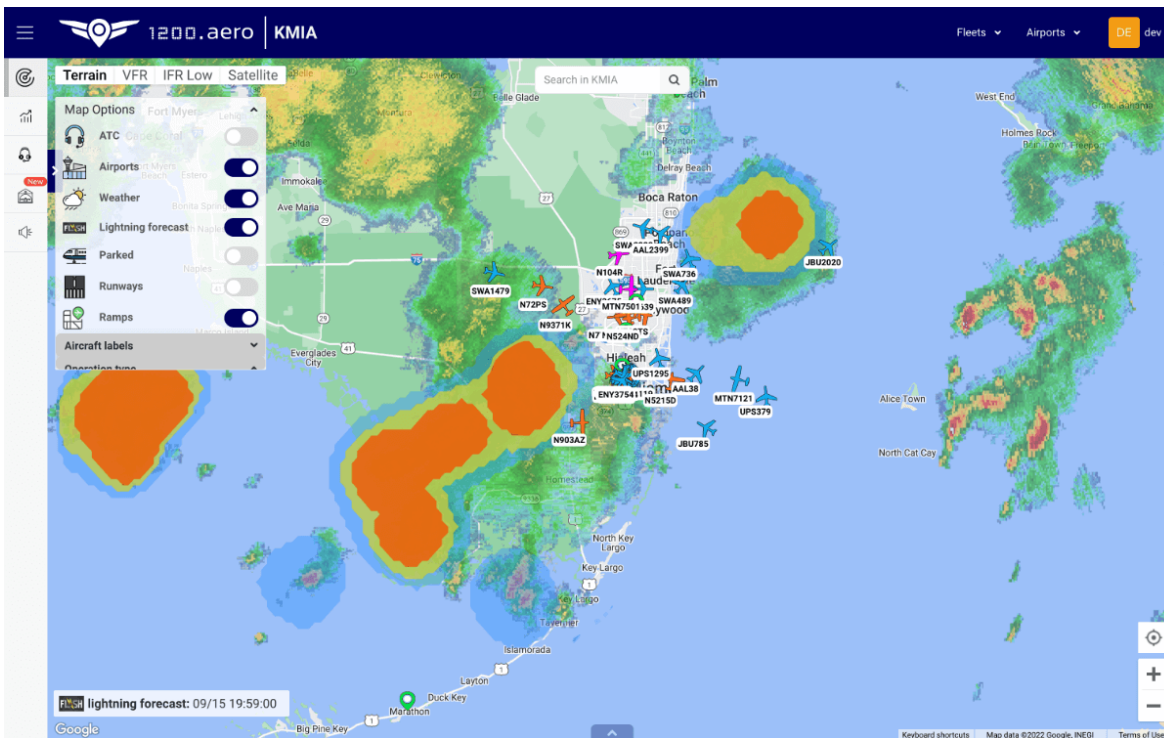


# SmartSky weather feature a highlight at NBAA-BACE



Skytelligence was produced with a combination of partners and available for FBOs

At the recent [NBAA-BACE 2022](#) in Orlando [SmartSky](#) showed visitors its Skytelligence, predictive weather information,

Only available in the 1200.aero WX+ application the feature offers fixed base operators (FBO's), airports and fleet operators weather information on a single platform, with the help of several partners.

Flash AI offers lightning prediction up to two hours in advance of the first strike. [AvMet's](#) Weather Impact Outlook (WIO) Suite predicts the impact to key arrival and departure corridors up to 24 hours ahead of time, and [Meandair's](#) WXNowCasting services enable planning for the safest routes around thunderstorms, rainfall, and turbulence predicted along the flight path.

"By connecting the algorithmic nowcasting and AI capabilities of predictive weather providers with a capability for monitoring and measuring aviation operations, we are increasing situational awareness and efficiency for FBOs and operators," said Brit Wanick, Vice President of Marketing and Partnerships for SmartSky in a release on the product. "Together with our partners, we are enabling the development of innovative applications, like 1200.aero WX+, that deliver better outcomes for the entire connected business aviation industry."

1200.aero WX+ is a web-based interface that provides timely advisory insights for FBO operations, airports and pilots through advance information about severe airborne weather and ground conditions. The application serves to enhance safety and awareness while reducing operating costs due to closures, flight delays and turbulence related incidents. Easily accessed via a common user interface, the individual data services become more powerful and illustrate the value of Aviation Data as a Service (ADaaS).

1200.aero WX+ will allow the more than 200 FBOs, airports and fleet operators across the USA to move from having numerous individual applications open on their service desks at once to having a single view of their most important environmental factors, selecting the layers they want to see for real-time and predictive situational awareness.